



# Our Stockport homes



**borough care  
group**  
Life in colour

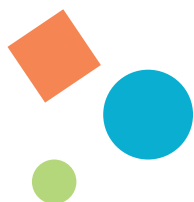






# Contents

- 4 About your chosen home
- 5 About Borough Care
- 7 How we care at Borough Care
- 9 How we live 'Life in Colour'
- 11 Colour on a plate
- 13 Celebrations, socials and adventures
- 15 Choosing the right home
- 17 Our admissions process
- 19 Stockport home fees
- 20 Notes





# Bamford Close



Located in Cale Green, Bamford Close is a charming home surrounded by nature. Its unique layout consists of four self-contained 'households', complete with ten bedrooms, a lounge, dining area and assisted bathing, shower and toilet facilities. There is also a large central lounge and a coffee shop for the residents to enjoy! Whether your loved one enjoys relaxing quietly or socialising with others, there's something for everyone at Bamford Close.



## A snapshot of our facilities

Digital Care System

On site hairdressing

Pretty courtyard gardens

Activities, games and trips

Bespoke menu planning

On site podiatrist

Access to kitchen facilities

WiFi

Alexa

Coffee shop

Regular outings

Sensory garden

Snack Boxes

## Hear from our families

“

This isn't the first care home my grandmother has been to but it is without a doubt the best. We are so happy with the care and love my grandmother receives at Bamford Close. She is treated with such care and dignity. She has been there for six months, and you can tell the staff genuinely care about her. We as a family are always made to feel welcome. The place has a lovely community feel. I cannot recommend this place enough.

-Nicola W  
(Granddaughter of Resident)



# About Borough Care

Borough Care is one of the largest providers of residential care and dementia services for older people across Stockport and Staffordshire.

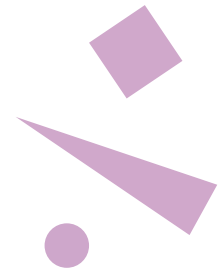
For over 30 years, our ten Stockport care homes have provided an exceptional approach to caring for our wonderful residents.

We know that no two people are the same, so there can never be one single care solution to suit everyone. Through our specialist dementia and residential care, we offer support that exceeds the unique needs of each resident and their family.

As a not-for-profit organisation, we reinvest any surplus money into the services we offer. We are committed to

providing the highest quality of care, with plenty of opportunities to flourish and have fun along the way. So, you can relax knowing that everything we do is to serve the best interests of our residents and their families.

We employ over 700 members of staff across our across our services. Each member of our team has a vital role to play in the delivery of outstanding services. Our loyal, skilled, and motivated workforce all strive to deliver high quality, personalised care with the ambition to be better every day.





# How we care at Borough Care

We pride ourselves on our flexible approach to caring for our residents.

We have over 20 years' experience in supporting people with a wide range of needs and understand the uniqueness of each individual and their families.

We know that choosing a care home is a big decision and you need to know that essential care needs are met. That is why we work with our residents and their families to ensure that every person in our care has a Personal Support Plan. This means looking in detail

at what is important to the individual.

We use state-of-the-art, digital systems to evidence our care in real time; document health and medication data; record what your loved one eats and drinks; and note the highlights of their social life. Using their handheld devices, our teams can quickly and easily evidence the care they are giving, allowing them extra time every day to spend with the people they care for.



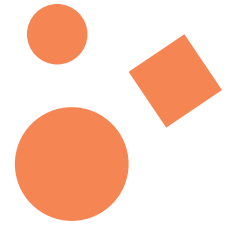




 borough care

ENTERTAINMENT





# How we live Life in Colour

Across our homes, our mission is to create environments where older people can stay well and live 'Life in Colour'.

We fundamentally believe that everyone should be encouraged, empowered and supported to live their best possible life, whatever their health or capabilities.

Our whole approach, embraced by our fully-trained staff, is to encourage every resident to live the most fulfilled and valuable lives, focused on quality relationships for the well-being and happiness of all those who choose to live with us, and their families.

We have strong ties to the local community and partnerships with others who help extend our range of services.

We have regular visits from hairdressers, aromatherapists, nail technicians, masseuses, local faith groups, mobile libraries, etc. But the highlights of many residents' weeks are the huge range of activities, exercise and excursions planned to add a daily dose of fun and stimulation: it can be a simple game of chair basketball; visits from local schools; a session of Kung Fu squash; or trips to the zoo, parks, or seaside!





# Colour on a Plate



We are passionate about ensuring that our residents leave each meal time feeling satisfied.

For so many of us, our daily lives revolve around food – we wake up thinking about what we are going to have for breakfast, lunch, and dinner to help us through the day and give us something to look forward to. We are firm believers that meals don't need to be boring, and we are passionate about ensuring that our residents leave each mealtime feeling satisfied.

Our partnerships ensure that we cater for their specific and individual needs. This could mean vegans and vegetarians, those with allergies, or residents who cannot eat

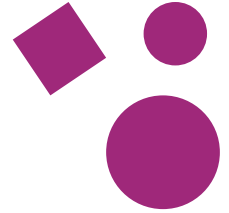
independently. The Catering Team strives to make personalisation key and introduced four-week menu cycles, which are different in each home, and change depending on preferences.

The Catering Team also works closely with each care home's Activity and Lifestyle Facilitator to shape menus around events, including their weekly buffets, which are run at every home. They design menus around the various event themes and get the residents involved. Previous events have been themed around Greek cuisine, cheese and wine (served in a rustic, farmhouse style) and the circus.





# Celebrations, socials and adventures



Our residents love to get out and about – either as a group or as individuals.

We appointed an Activity Lifestyle Facilitator (ALF) in every home. Their job? To help enrich the social life of the residents. ALFs are like social butterflies and event managers all rolled into one. They really get to know each resident to ensure everyone can experience enjoyable moments every day. It may be as simple as an afternoon stroll for a coffee or to the local shop.

ALFs love planning parties and events, including Christmas, Eid, St Patrick's Day and lots more.

Relatives can expect to receive lots of invites to get together for Mother's

and Father's Day, Christmas, birthdays, Halloween and lots more!

Finding out about a resident's character, interests and life story is the basis of effective communication and part of the ALFs role is to develop meaningful environments around a home to stimulate interaction, encourage eating or help direction.

Our residents love to get out and about – either as a group or as individuals. Previous trips have included football matches, the cinema, Knowsley Safari Park, Blackpool Tower and lots more.





# Choosing the right care home

Our 12 care homes across Stockport are as individual as the people who live in them.

Each home is a safe space for our residents to relax, feel safe and belong.

Each home is designed as a unique small 'household' – a cluster of bedrooms revolving around their own lounge and dining area. This layout is particularly helpful for people living with dementia due to recognisable cues for orientation.

Borough Care homes are built to allow residents to live their lives to the fullest, complete with hair salons, bistros, pubs and cinema rooms!

Choosing the right care home will depend on many factors such as the location and the facilities available.

Our team can help you choose the right home for your loved one.

Call us on **0161 475 0140** or email us at [enquiries@boroughcare.org.uk](mailto:enquiries@boroughcare.org.uk)







# Our Admissions Process

A member of our team will then greet you both on arrival, give you a tour of the home, and help you settle into your new space with ease.

On moving-in day, we do everything to ensure that you and your loved one have a smooth, positive experience.

A member of our team will greet you both on arrival, give you a tour of the home, and help you settle into your new space with ease.

Your new room will be filled with welcoming treats, food and drink, and other essentials that are personal to you.



Putting extra effort into creating personalised spaces for our residents makes all the difference when it comes to moving in, so we always make sure to decorate your space to your personal preferences.

Of course, we're sure you'll have a few of your own personal items with you to make your space feel special too.



# Stockport home fees

Care home	Standard *Per week	Ensuite *Per week	Premium *Per week
Bamford Close	£1,148		
Bruce Lodge		£1,321	£1,390
Bryn Haven	£1,102	£1,137	
Cawood House	£1,043	£1,071	
Lisburne Court	£1,077	£1,112	£1,183
Meadway Court	£1,077	£1,112	
Reinbek	£1,112	£1,121	£1,250
Shepley House	£1,112	£1,148	
Silverdale	£1,092	£1,121	£1,082
Wellcroft	£1,183	£1,216	

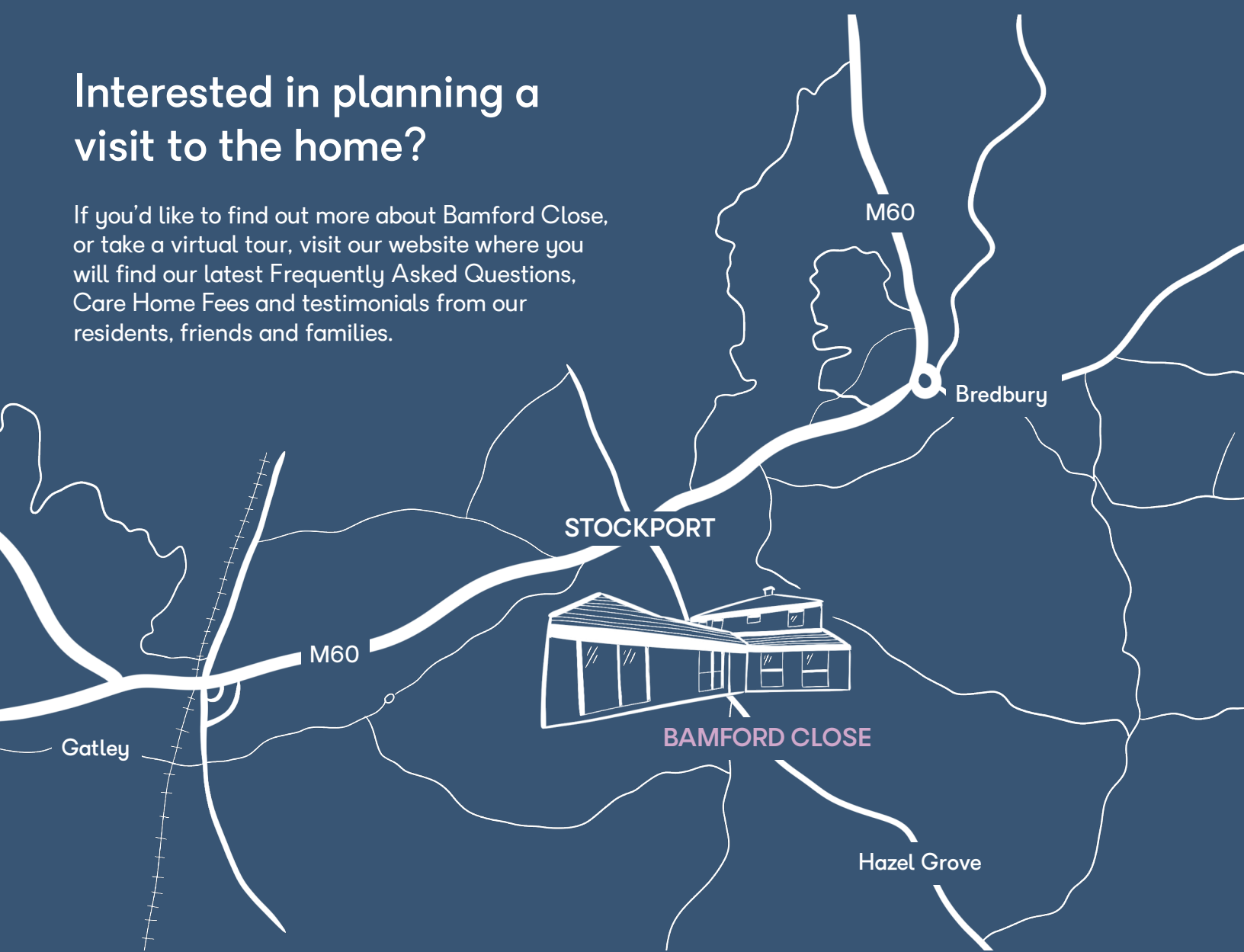






# Interested in planning a visit to the home?

If you'd like to find out more about Bamford Close, or take a virtual tour, visit our website where you will find our latest Frequently Asked Questions, Care Home Fees and testimonials from our residents, friends and families.



To book a visit; spend time with our residents; talk to staff; and see how we choose to live 'Life in Colour' reach out to our team at [bamfordclose@boroughcare.org.uk](mailto:bamfordclose@boroughcare.org.uk) or call 01538 712460

## Bamford Close

Adswood Lane West  
Cale Green  
Stockport  
SK3 8HT